

Sandi's dish towels – a color and stripe variation from A WEAVER'S BOOK OF 8-SHAFT PATTERNS, edited by Carol Strickler.

I needed to weave towels to sell in our Heritage Arts Center at Rice's Hotel/Hughlett's Tavern, Heathsville, VA. The Tavern Spinners and Weavers guild have used pattern #82 & #83 in what we refer to as the "Strickler Book" for towels many times, so I decided on it.

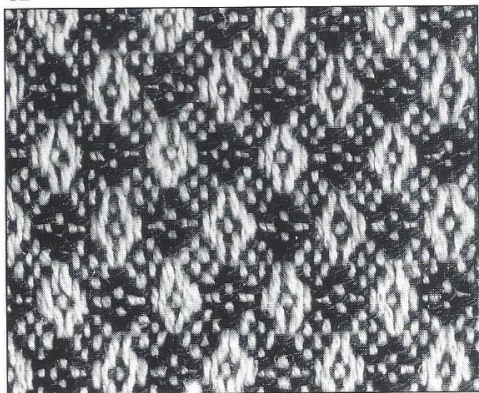
#82 & #83

by Linda J. Waid

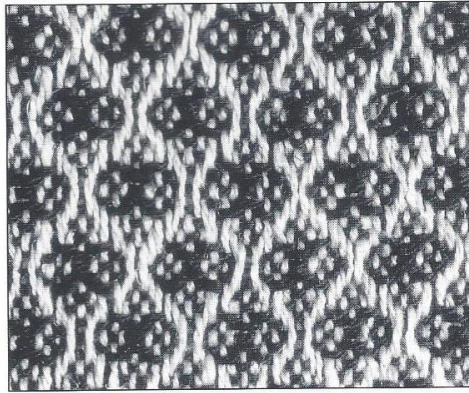
Point twill, by Margaret and Thomas Windeknecht *Color-and-Weave*. Note: The backs (not shown) of these samples are different and equally interesting.

			1	2	3	4	5	6	7	8
8			0					0		0
	7	7					0		0	0
		6		6				0	0	0
			5		5				0	0
4					4			0	0	0
						3			0	0
3							2			0
								1		0
									0	0

82



83



	/	/	/	/	/	/	/	/	/	/
	/	/	/	/	/	/	/	/	/	/
	/	/	/	/	/	/	/	/	/	/
	/	/	/	/	/	/	/	/	/	/
	/	/	/	/	/	/	/	/	/	/
	/	/	/	/	/	/	/	/	/	/
	/	/	/	/	/	/	/	/	/	/
	/	/	/	/	/	/	/	/	/	/
	/	/	/	/	/	/	/	/	/	/
	/	/	/	/	/	/	/	/	/	/

#82

#83

26

I made the following decisions as I wound warp and selected weft yarns. Instead of using a one color warp, I decided to have stripes. I threaded shafts 1 to 8 and back to 1 with a coneflower blue and then shafts 2 to 8 and back to 2 with a baby blue, starting and ending with a stripe of coneflower blue at each edge.

Woven with 2 shuttles using an ivory for 4 threads and grey blue for 8 threads.





Main body woven with one shuttle in a more grey blue with white border.



Main body woven with one shuttle in off white flake with grey blue border.

I believe these are the back of treading #83, but confess I was having so much fun I didn't document!

Sandi