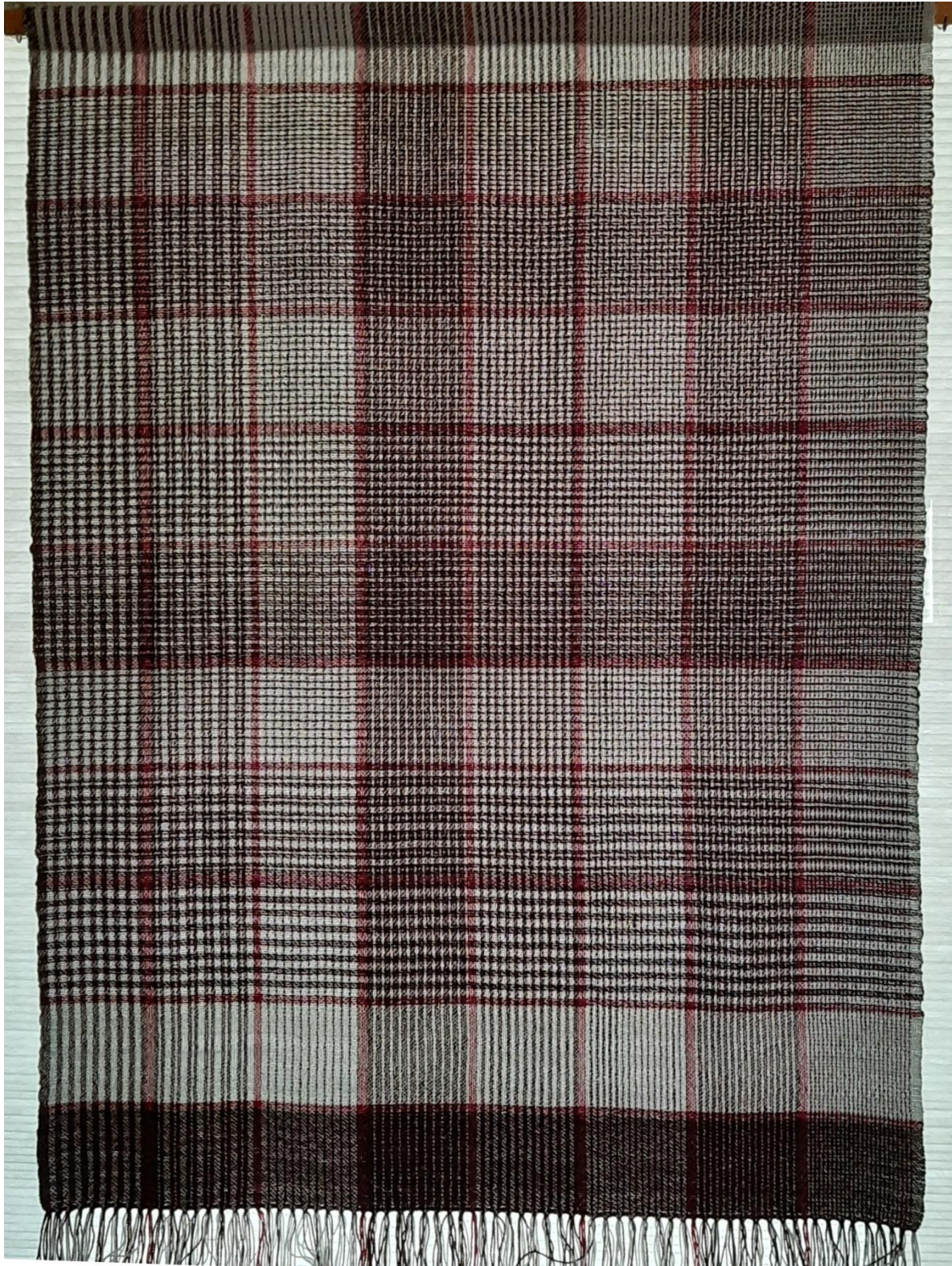


Color and Weave effect Gamp (for floor or table looms)

Based on an article in Shuttle Craft Portfolio from November 1957 written by Evelyn Longard



Color and weave effect is the arrangement of light and dark threads to make a pattern. This month we're exploring color and weave in plain weave. Choose high contrast for the light and dark yarns plus a color to stand out for a contrast.

The gamp (which is a sampler) is based on 8 different blocks as mentioned in Evelyn Longard's article. Each block is a different arrangement of light and dark threads. The sampler could be enlarged by adding more blocks with additional arrangements of light and dark threads, though the 64 variations provides a lot of information. Each block is separated by 2 contrasting color threads, to visually divide the blocks. At the top and right side there are additional light threads with dark threads at the left and bottom. These will allow you to "read" the number of threads and colors making your gamp a design tool for future use.

Warping the Gamp

There are 24 ends in each block using 8/4 or 3/2 cotton sleyed 1 end/dent in a 12 dent reed (it also worked well with acrylic weaving yarn). This will be slightly over 18" in the reed.

Use a 1,2,3,4 threading. The gamp will be woven as plain weave. The tie-up will be 1&3 and 2&4.

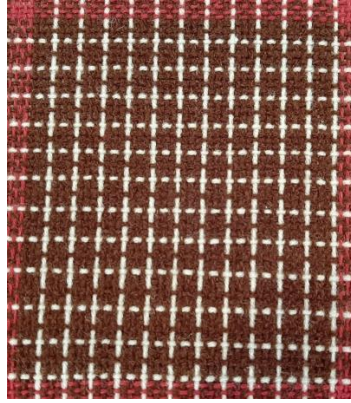
Whether you warp front to back or back to front you have choices.

- You can wind your warp in the color order shown in the draw down
OR - I found it easier to write it out-
 - 6 light
 - Block 1 - (1 dark 1 light) x12
 - 2 contrast
 - Block 2 - (1 light 2 dark) x8
 - 2 contrast
 - Block 3 - (1 dark 2 light) x8
 - 2 contrast
 - Block 4 - (2 dark 2 light)x6
 - 2 contrast
 - Block 5 - (1 light 3 dark)x6
 - 2 contrast
 - Block 6 - (3 light 1 dark) x6
 - 2 contrast
 - Block 7 - (3 light 2 dark 1 light 2 dark)x3
 - 2 contrast
 - Block 8 - (3 dark 3 light) x4
 - 6 dark
- Wind your 6 edge light color, 12 pair of light and dark together followed by the 2 contrast - repeating for the 8 blocks and ending with the 6 dark to finish. Then as you thread you can move the threads into the light dark order as designated for each block.
- Front to back warping could also wind 102 light, 102 dark and 14 contrast, and place them in the reed as designated for each block.

Block 1 - (1 dark 1 light)



Block 5 - (1 light 3 dark)



Block 2 - (1 light 2 dark)



Block 6 - (1 dark 3 light)



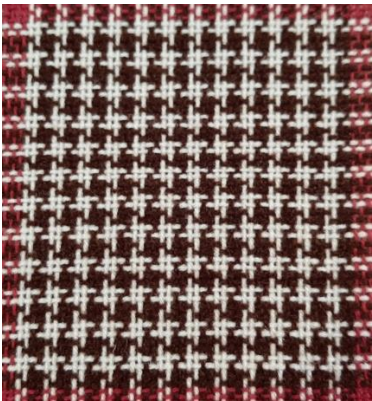
Block 3 - (1 dark 2 light)



Block 7 - (3 light 2 dark 1 light 2 dark)



Block 4 - (2 dark 2 light)



Block 8 - (3 dark 3 light)



Weaving the Gamp – Now the magic begins!

Use 3 shuttles. One dark and one light, they will weave the pattern blocks and one contrast to divide between blocks. When you need the contrast, it will be for 2 rows and end the contrast thread. The light and dark threads will be carried up the side, not ended.

Follow your normal process to even your warp threads and prepare for your heading. Weave at least 6 rows using light thread and hemstitch the top edge and you are ready to start the gamp.

We will be using plain weave in the same color order as threaded. I used my warp as the guide for which color and number of picks/color. It is as follows.

6 light
Block 1 - (1 dark 1 light) x12
2 contrast
Block 2 – (1 light 2 dark) x8
2 contrast
Block 3 – (1 dark 2 light) x8
2 contrast
Block 4 – (2 dark 2 light)x6
2 contrast
Block 5 – (1 light 3 dark)x6
2 contrast
Block 6 – (3 light 1 dark) x6
2 contrast
Block 7 – (3 light 2 dark 1 light 2 dark)x3
2 contrast
Block 8 -(3 dark 3 light) x4
6 dark

Your blocks will show themselves on a diagonal from upper right to lower left. The magic is that each column will also show 7 other variations on the each color order threading. Some will be great and some not so! If you wish you can weave 2 more blocks, one with only light weft and one with only dark weft. When you have finished, hem stitch.